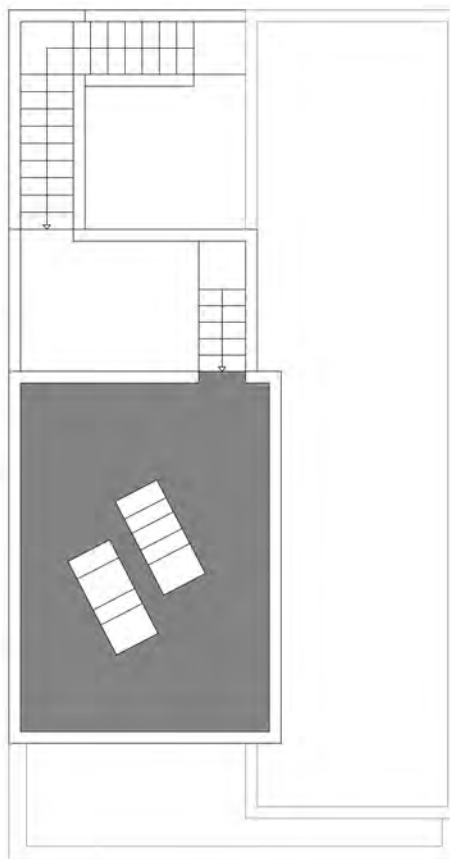




Ground floor



Solarium

0 0.5 1 2 3 4 5

Homes with total built area of 140.45 m<sup>2</sup>, situated on plots from 153.50 m<sup>2</sup>, consisting of 2 bedrooms, 2 bathrooms, spacious lounge-dining room with direct access to the terrace and splash pool area.



**Premium Property Spain**

Activos Inmobiliarios y Residencial Premium

BUNGALOWS

FLOOR PLAN

TOTAL HOME	86,30 m <sup>2</sup>
TERRACE GROUND FLOOR	28,72 m <sup>2</sup>
SOLARIUM	25,43 m <sup>2</sup>
<b>TOTAL</b>	<b>140,45 m<sup>2</sup></b>

**TYPE - A**

2 BEDROOMS - 2 BATHROOMS